

MONOCOLOUR AND TW REMOTE CONTROL

SEQUENCERS

Ref: 41.093

3V

- For dual colour (warm white + cool white) led controller.
- Ultra-sensitive colour adjustment touch wheel.
- Each remote can match one or more receivers.
- AAAx2 battery powered.
- Has led indicator light.
- Magnet on the back which can be fixed to back holder.

Compatible with receiver:

- 41.091



voltage



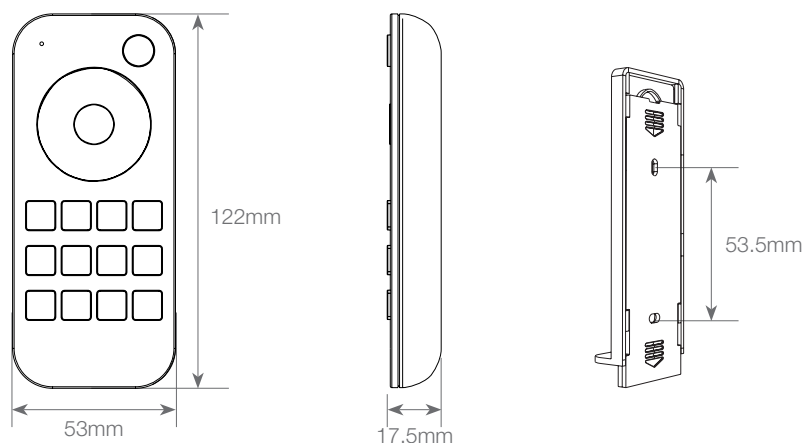
IP20

Voltage (V)	3V
Control	2.4GHz
Working current	< 5mA
Standby current	< 10µA
Distance control	30m
Measurements	122x53x17.5mm
Working temperature	-30°C / +55°C
Wall bracket	yes
Memory	yes
Control intensity	yes
Receiver included	no
Waterproofing	IP20
Packaging	1 unit
Guarantee	3 years

Approved by:



Measurements:



BARCELONA
C/ Carles Buigues, 13
08420 Canovelles
Info@luznegra.net
Tel: +34 938 402 598

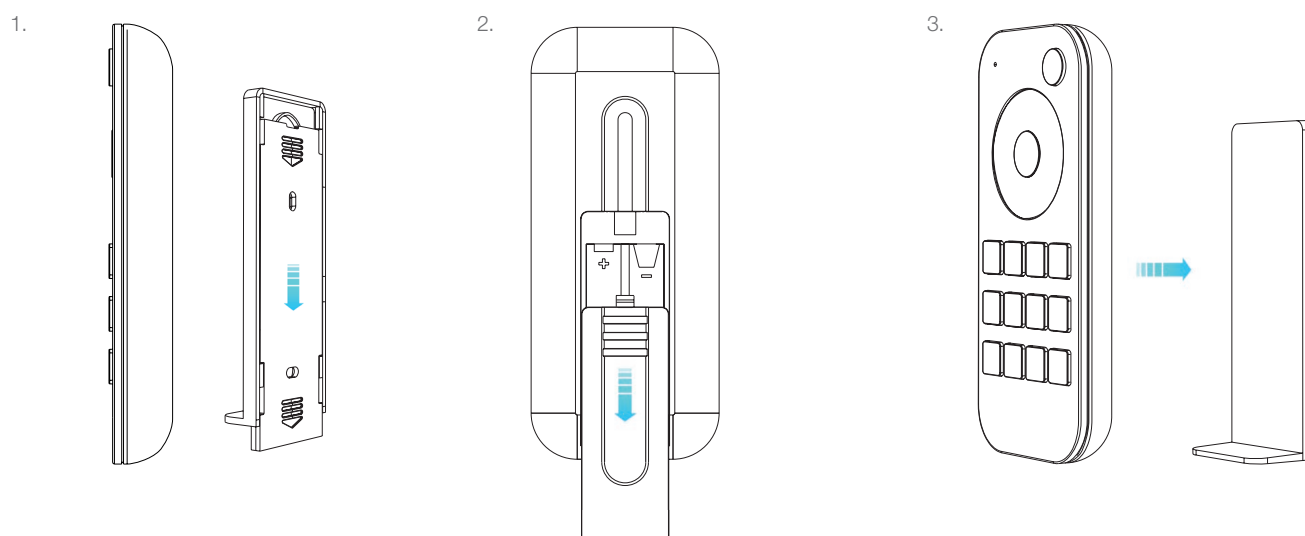
MADRID
C/ Adaptación, 27
28906 Getafe
centro@luznegra.net
Tel: +34 916 416 081

PARIS
113 Avenue Joffre
77450 Esbly
france@luznegra.net
Tel: +33 (0) 160 426 585

MONOCOLOUR AND TW REMOTE CONTROL

SEQUENCERS

Mechanical installations



The remote can be fixed in 3 different ways:

1. By sticking directly onto a metal surface.
2. By fixing the remote's back holder onto the wall with 2 screws.
3. By gluing the remote's holder to the wall.

Working

- When the light is turned on, the indicator is displayed in blue. When the light is turned off, the indicator is displayed in red.
- When the colour wheel is touched, the indicator will display the same colour.
- When invalid (if the light is off), the indicator is displayed in red.
- To extend the battery life, don't touch or press keys for a few seconds and the touch wheel will enter sleep mode. To get out of sleep mode, press any key on wheel.

Match remote control (2 ways)

The end user can choose the suitable match/delete ways. Two options are offered:

1. Use the controller's Match key

Match: On the remote, short press match key, immediately press on/off key (single zone remote) or zone key (multiple zone remote). The LED indicator flashes quickly a few times, meaning a match is successful.

Delete: Press and hold match key for 5s to delete all matches. The led indicator flashes quickly a few times, meaning all matched remotes have been deleted.

2. Use power restart

Match: On the remote, switch off the power, then switch on again. Repeat. Immediately short press on/off key (single zone remote) or zone key (multiple zone remote) 3 times.

Delete: Switch off the power, then switch on again. Repeat. Immediately short press on/off key (single zone remote) or zone key (multiple zone remote) 5 times. The light blinks 5 times, meaning all matched remotes have been deleted.

MONOCOLOUR AND TW REMOTE CONTROL


SEQUENCERS

Diagram:




 Turn on/off light.

 Touch to change colour temperature.

 Adjust brightness, short press 10 levels, long press 1-6s for continuous 256 levels adjustment.

 WW CW Get warm white or cold white directly.

 25%, 50%, 75%, 100% brightness.

 Short press to re-call the scene, long press 2s to save current state into S1/2/3/4. the LED indicator displays green when save OK.

Safety information

1. Read all instructions carefully before you begin this installation.
2. When installing battery, pay attention to the battery's positive and negative polarities.
If the remote will be out of use for a long time, remove the battery.
When the remote distance becomes less and it does not detect, replace the battery.
3. If there is no response from the receiver, please re-match the remote.
4. Gently handle remote, do not drop.
5. Only for indoor use and in dry locations.